



CIRCA 1969



CIRCA 1980



2014

APPROVED AND PERMITTED ON 2002
103158949

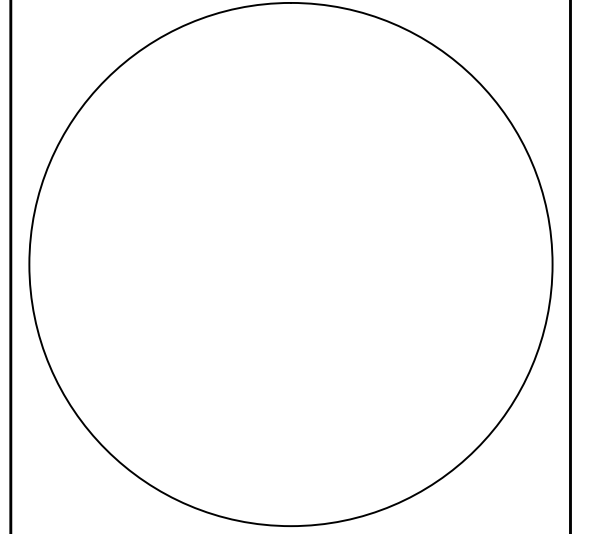


PROPOSED

444 6TH AVENUE

444 6TH AVENUE
NEW YORK, NEW YORK

SEAL & SIGNATURE



GEORGE RANALLI
ARCHITECT

447 WEST 127TH STREET
NEW YORK, NEW YORK
10027

212.255.6263
212.255.1049 FAX

WWW.GEORGERANALLI.COM

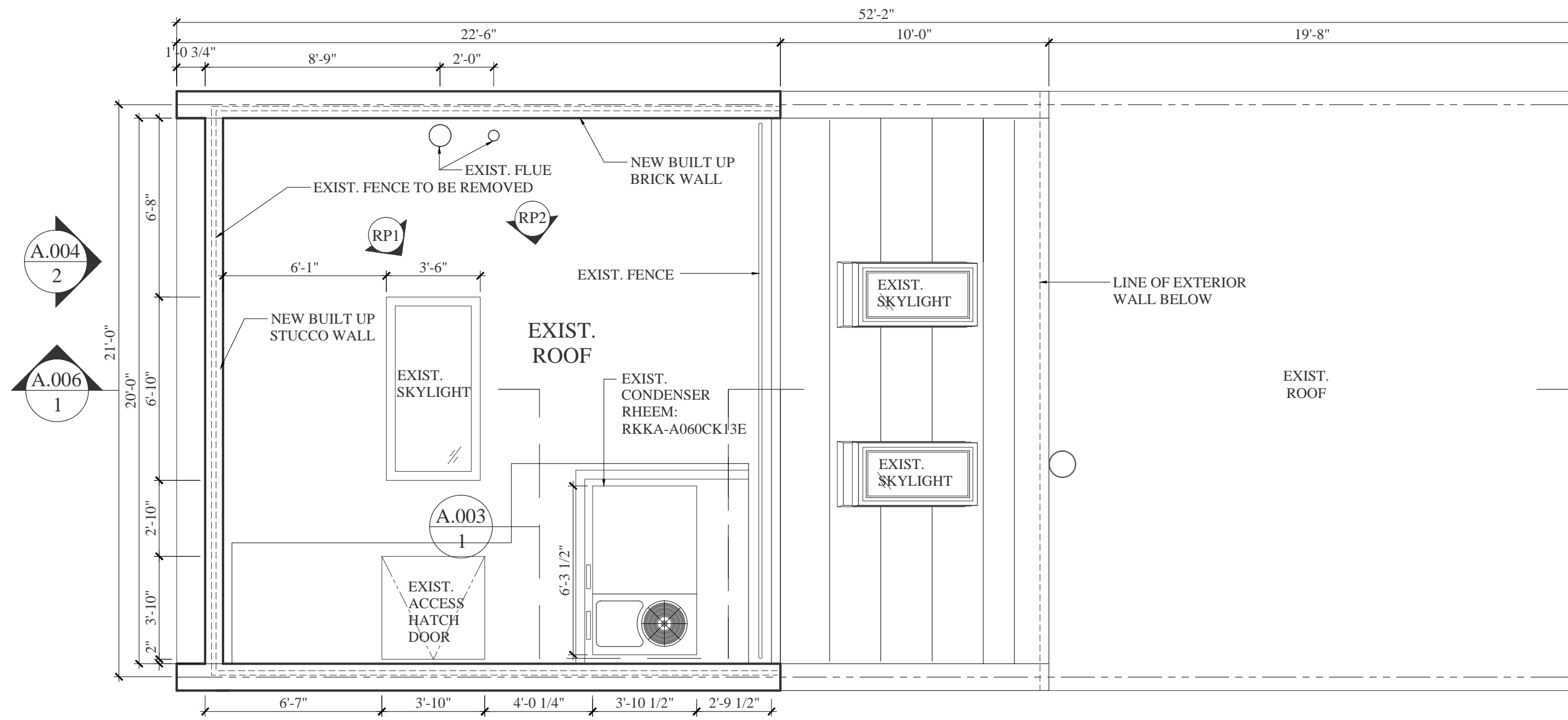
TITLE:
CHANGE
OVER
TIME

CURRENT AS OF:
4/14/2015

SCALE:
AS NOTED

DRAWING #:
A-002.00

SHEET #:
02



1 ROOF PLAN
SCALE: 1/4" = 1'-0"



RP1 REFERENCE EXIST. PHOTO 1



RP3 LOOKING AT AC UNIT FROM OPPOSITE CORNER OF 10TH STREET & 6TH AVE

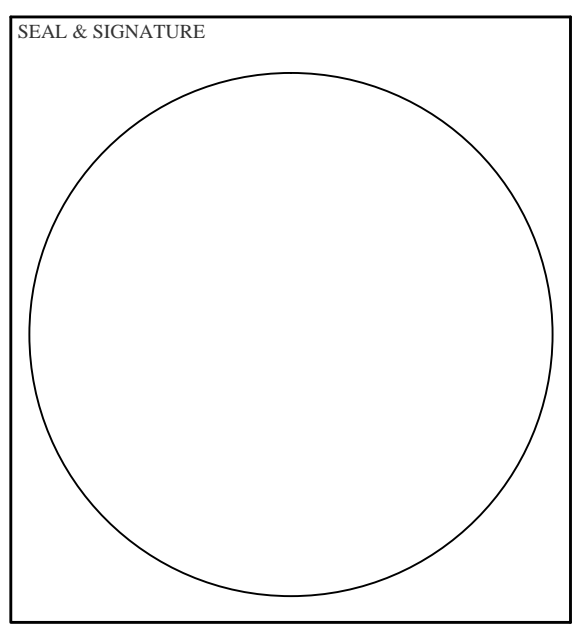


RP4 LOOKING AT AC UNIT FROM OPPOSITE CORNER OF 11TH STREET & 6TH AVE



RP2 REFERENCE EXIST. PHOTO 2

444 6TH AVENUE
444 6TH AVENUE
NEW YORK, NEW YORK



GEORGE RANALLI ARCHITECT
447 WEST 127TH STREET
NEW YORK, NEW YORK 10027
212.255.6263
212.255.1049 FAX
WWW.GEORGERANALLI.COM

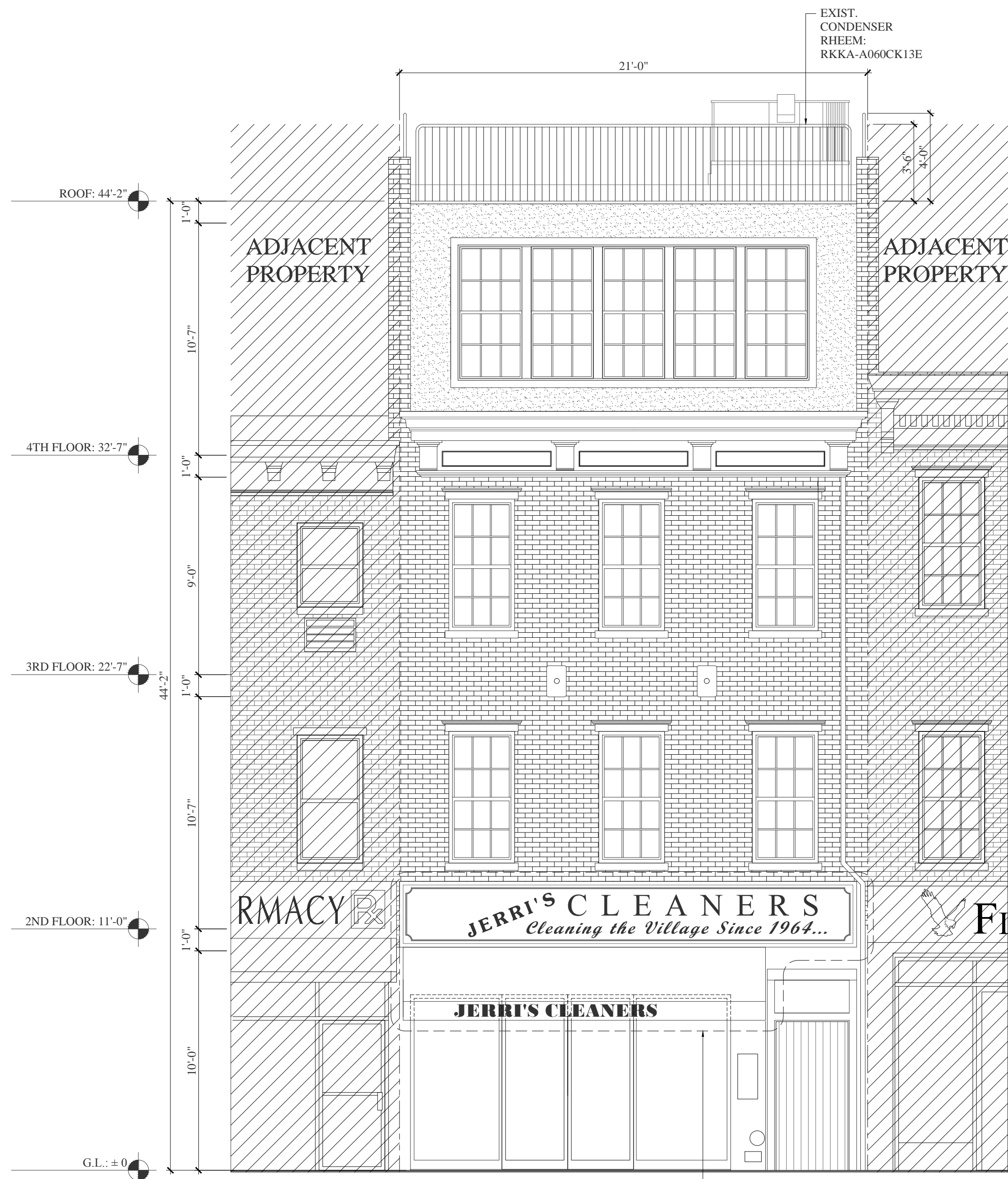
TITLE:
VIEW OF AC UNIT

CURRENT AS OF:
4/14/2015

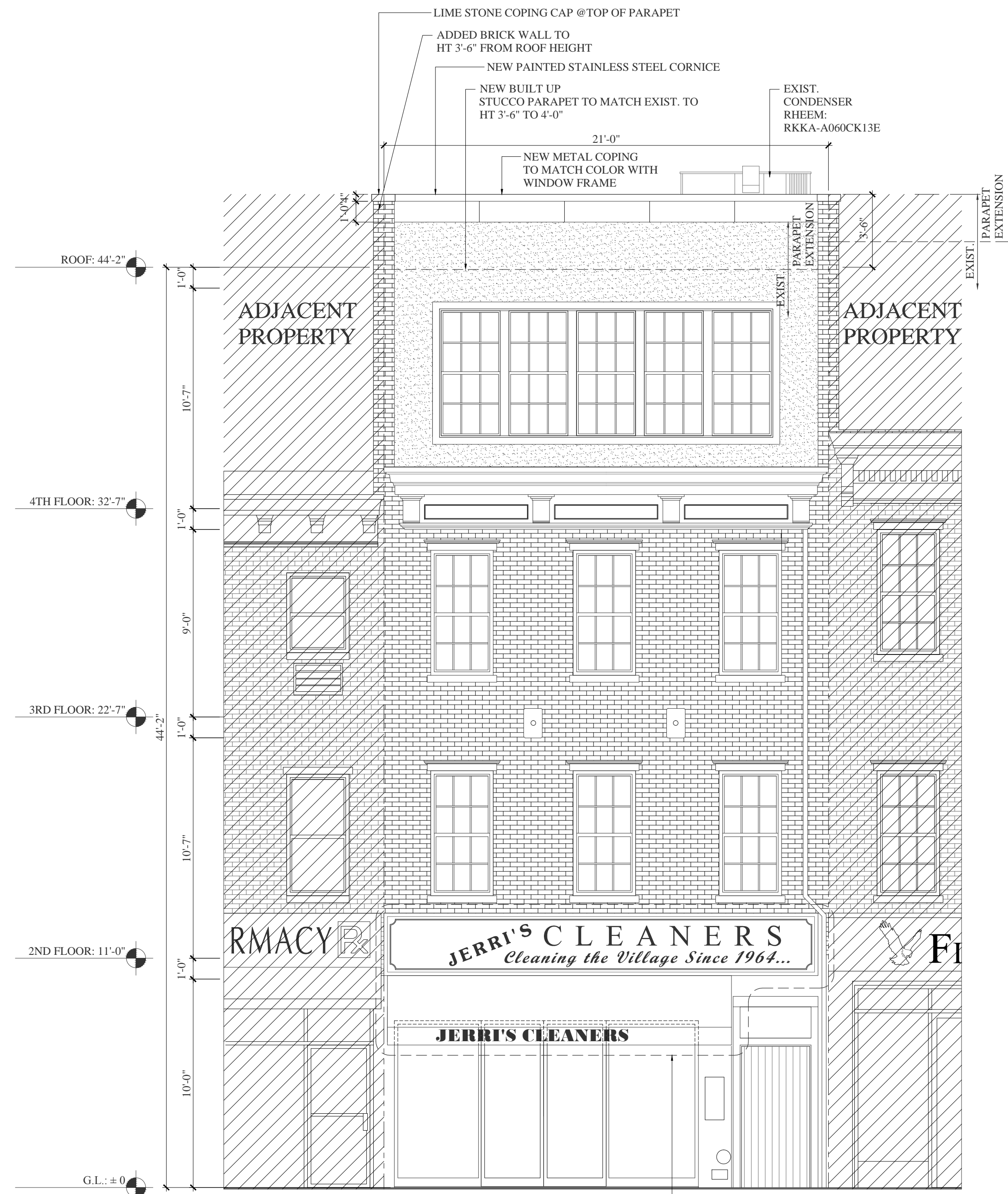
SCALE:
AS NOTED

DRAWING #:
A-003.00

SHEET #:
03



1 EXIST. FRONT ELEVATION
SCALE: 1/4" = 1'-0"

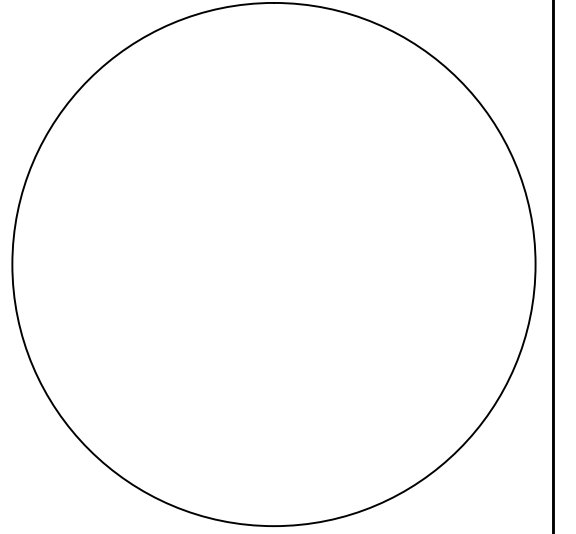


2 PROPOSED FRONT ELEVATION
SCALE: 1/4" = 1'-0"

444 6TH AVENUE

444 6TH AVENUE
NEW YORK, NEW YORK

SEAL & SIGNATURE



GEORGE RANALLI
ARCHITECT

447 WEST 127TH STREET
NEW YORK, NEW YORK
10027

212.255.6263
212.255.1049 FAX

WWW.GEORGERANALLI.COM

TITLE:
FRONT ELEVATION
BEFORE & AFTER

CURRENT AS OF:
4/14/2015

SCALE:
AS NOTED

DRAWING #:
A-004.00

SHEET #:
04



1 EXIST. FRONT PHOTO



2 PROPOSED FRONT PHOTO

444 6TH AVENUE
 444 6TH AVENUE
 NEW YORK, NEW YORK

SEAL & SIGNATURE

GEORGE RANALLI
 ARCHITECT
 447 WEST 127TH STREET
 NEW YORK, NEW YORK
 10027
 212.255.6263
 212.255.1049 FAX
 WWW.GEORGERANALLI.COM

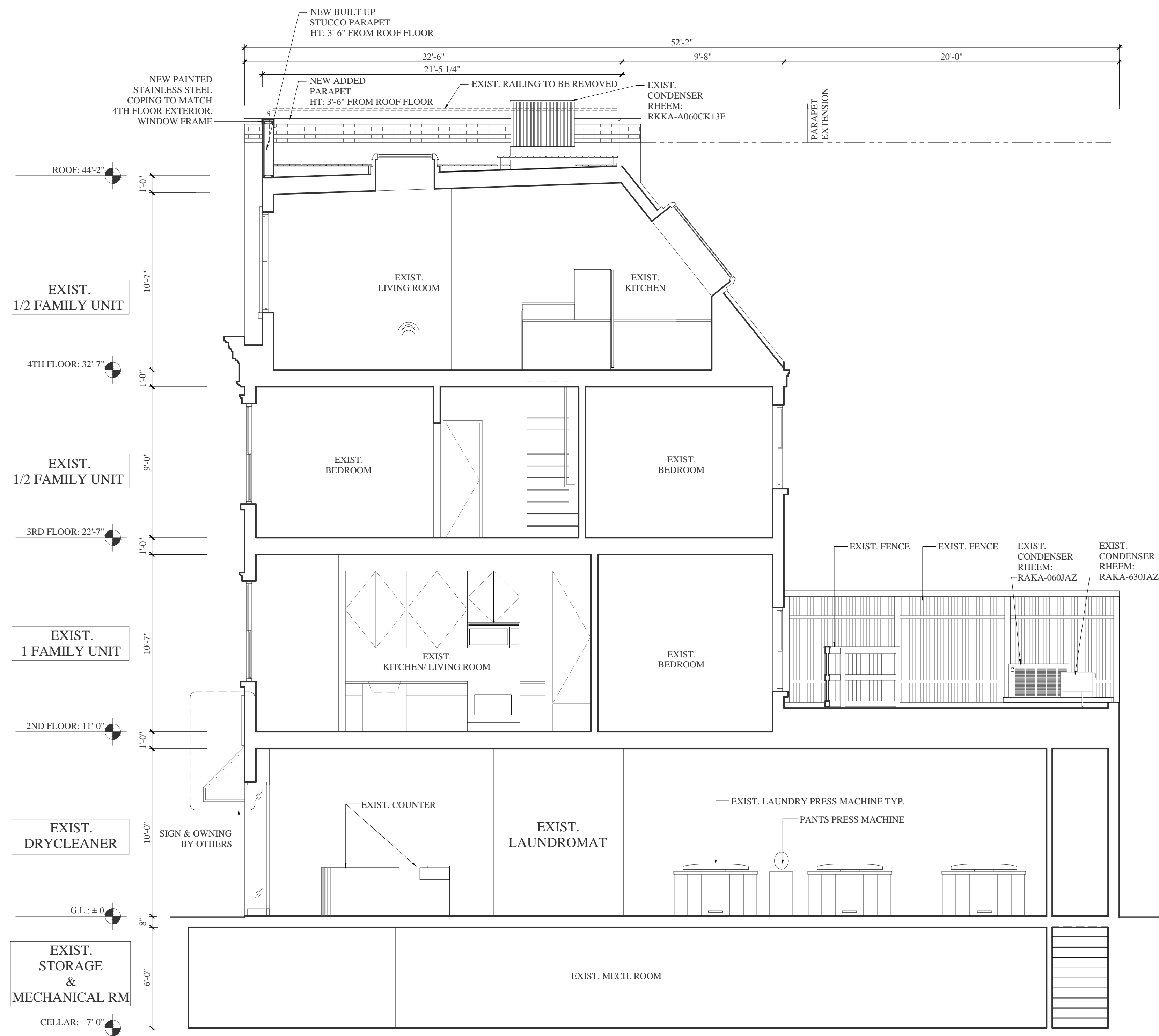
TITLE:
 FRONT PHOTO
 BEFORE & AFTER

CURRENT AS OF:
 4/14/2015

SCALE:
 AS NOTED

DRAWING #:
 A-005.00

SHEET #:
 05

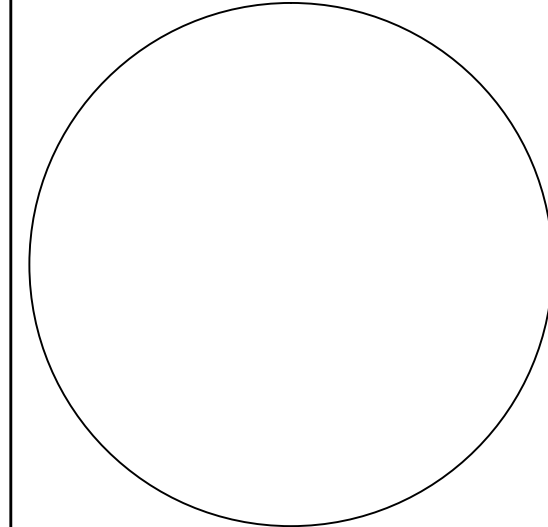


1 SECTION
SCALE : 1/4" = 1'-0"

444 6TH AVENUE

444 6TH AVENUE
NEW YORK, NEW YORK

SEAL & SIGNATURE



GEORGE RANALLI
ARCHITECT

447 WEST 127TH STREET
NEW YORK, NEW YORK
10027

212.255.6263
212.255.1049 FAX

WWW.GEORGERANALLI.COM

TITLE:
PROPOSED SECTION

CURRENT AS OF:
4/14/2015

SCALE:
AS NOTED

DRAWING #:
A-006.00

SHEET #:
06



1 EXIST. PHOTO



2 PROPOSED PHOTO

444 6TH AVENUE
 444 6TH AVENUE
 NEW YORK, NEW YORK

SEAL & SIGNATURE

GEORGE RANALLI
 ARCHITECT
 447 WEST 127TH STREET
 NEW YORK, NEW YORK
 10027
 212.255.6263
 212.255.1049 FAX
 WWW.GEORGERANALLI.COM

TITLE:
 BEFORE AND AFTER VIEW
 FROM 10TH STREET &
 6TH AVE

CURRENT AS OF:
 4/14/2015

SCALE:
 AS NOTED

DRAWING #:
 A-007.00

SHEET #:
 07



1 EXIST. PHOTO



2 PROPOSED PHOTO

444 6TH AVENUE
444 6TH AVENUE
NEW YORK, NEW YORK

SEAL & SIGNATURE

GEORGE RANALLI
ARCHITECT

447 WEST 127TH STREET
NEW YORK, NEW YORK
10027

212.255.6263
212.255.1049 FAX

WWW.GEORGERANALLI.COM

TITLE:
BEFORE AND AFTER VIEW
FROM 11TH STREET &
6TH AVE

CURRENT AS OF:
4/14/2015

SCALE:
AS NOTED

DRAWING #:
A-008.00

SHEET #:
08



73 8TH AVE, NY, NY



108 GREENWICH AVENUE, NY, NY



235 WEST 11TH STREET, NY, NY



342 WEST 15TH STREET, NY, NY



104 GREENWICH AVENUE, NY, NY



280 WEST 4TH STREET, NY, NY

444 6TH AVENUE
 444 6TH AVENUE
 NEW YORK, NEW YORK

SEAL & SIGNATURE

GEORGE RANALLI
 ARCHITECT

447 WEST 127TH STREET
 NEW YORK, NEW YORK
 10027

212.255.6263
 212.255.1049 FAX

WWW.GEORGERANALLI.COM

TITLE:
 CASE STUDIES

CURRENT AS OF:
 4/14/2015

SCALE:
 AS NOTED

DRAWING #:
 A-009.00

SHEET #:
 09